



CREATIVITY
+ TECHNOLOGY

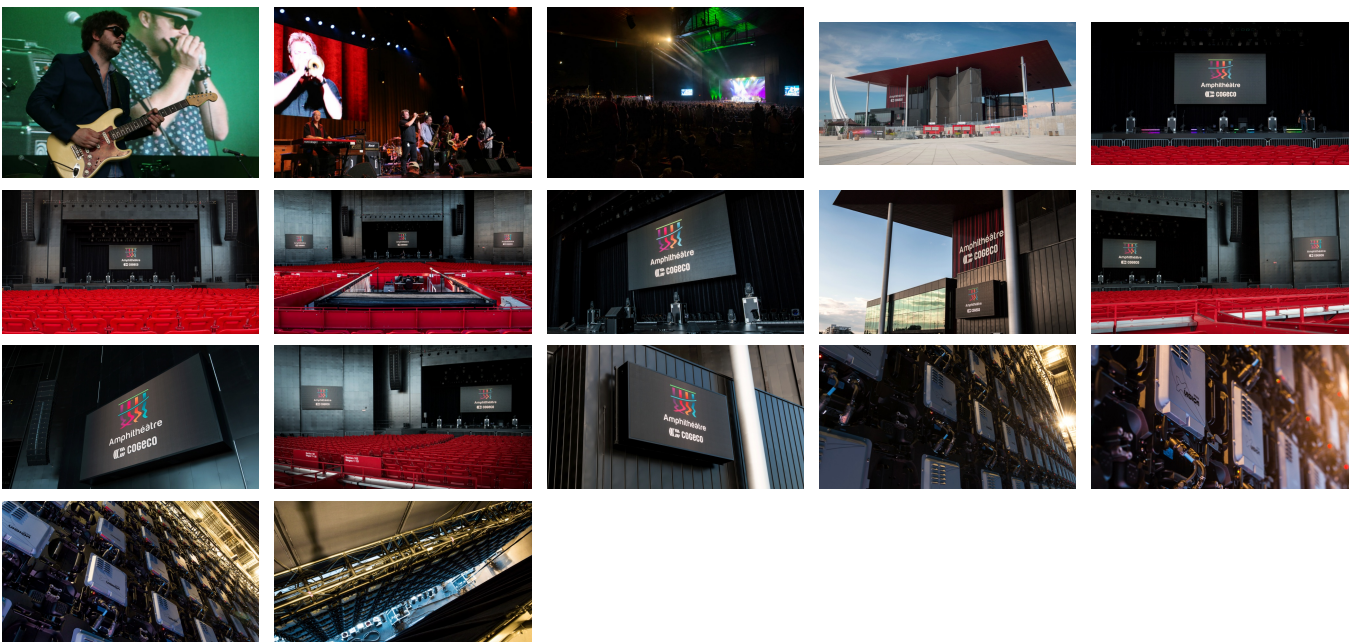
GIANT SCREENS

VIDEO DISPLAY PANEL

Amphitheater Cogeco

Trois-Rivieres, Quebec, Canada, 2015

Amphitheater Cogeco, situated next to the St. Lawrence river halfway between Quebec City and Montreal, hosts exceptional shows. This outdoor amphitheatre includes first-rate stage equipment, making it a perfect venue for world-class events. The total seating capacity of 9,000 includes 3,500 covered seats and another 5,500 on a grassy area. Such a large infrastructure clearly required dynamic display equipment in order to broadcast real-time images from the stage and ensure an optimum experience for all spectators.



Description

XYZ Cultural Technology supplied, installed and integrated four large-scale LED display panels. The main panel, located backstage, is a portable 144-tile mosaic video wall measuring 8.2 x 4.6 m. It is composed of modules that can be disassembled and reconstituted into different configurations, making it highly versatile. It can also be completely dismantled depending on event needs.

In addition, two permanent indoor signage panels measuring 4.6 x 2.5 m were installed on either side of the stage, and a same-sized outdoor panel was installed at the entrance to the amphitheatre. The display systems are independent of one another and can broadcast four different contents simultaneously.

XYZ also supplied and installed a digital video production mobile control unit and a stage rigging system. The amphitheatre is now equipped with high-quality adjustable video broadcasting equipment.

Expertise

Video
Control systems

Mandate

Equipment
Integration
Programming

Production

Cogeco

Design

20k